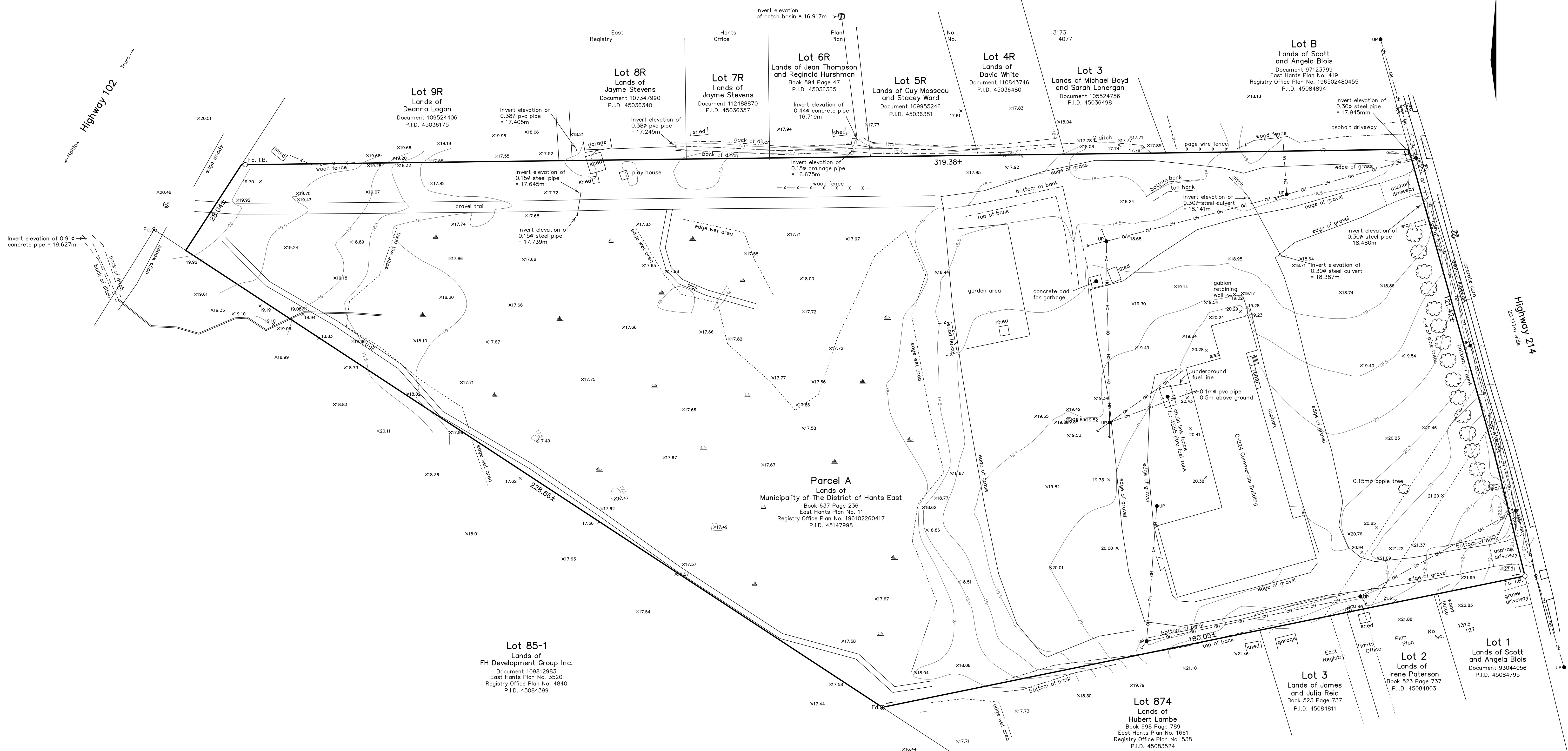


Legend:

- ..... Perimeter of lands dealt with by this survey
- ..... Survey Marker Flood
- ..... Survey Marker Found with Identifier
- ..... Nova Scotia Coordinate Monument
- ..... Iron Bar Found
- ..... Iron Tube Found
- ..... Utility Pole with Guy
- ..... Land Information Services Parcel Identification Number
- ..... Centre Line
- ..... Fence
- ..... Easement
- ..... Overhead Utility Lines
- ..... Wet Area
- ..... Manhole
- ..... Water Valve
- ..... Fire Hydrant
- ..... Catch Basin
- ..... Culvert
- ..... Spot Elevation

Notes:

- Field surveys were carried out during the period 10 to 18 November, 2020.
- Elevations are derived from N.S.C.M. 23656 with a published elevation of 27.017m (CGVD28).
- Contour interval is 0.5 metres.



Site Plan of Parcel A  
Lands of Municipality of The  
District of Hants East  
Highway No. 14, Elmsdale  
County of Hants  
Province of Nova Scotia  
Scale 1:500 (Metric)

File: 1688 Drawing: 1688Site

Alan Gallant  
Nova Scotia Land Surveyor  
Belmar, Nova Scotia  
Tel 883-7554 Fax 883-7401

